



CBe-learn High School Open House

February 5, 2026



learning | as unique | as every student



Calgary Board
of Education



Acknowledging the Land Where We Gather

Oki, Dādánast'áda, Âba Wathtec, Tânisi, Taanishi, Bonjour, Hello

The Calgary Board of Education acknowledges the traditional territories and oral practices of the Treaty 7 Nations, including the Siksikaitsitapi, comprised of the Siksika, the Kainai, the Piikani, and the Amskapi Piikani Nations. We acknowledge the Tsuut'ina Nation, the Îyârhe Nakoda, comprised of the Chiniki, Bearspaw, and Goodstoney Nations, the Métis Nation within Alberta, and all people who make their homes in the Treaty 7 region of southern Alberta.

This land on which we gather is traditionally known as Moh'kinstsis (Blackfoot), Guts'ists'i (Tsuut'ina), Wîchîspa (Nakoda), and otôskwanihk (Northern Michif & Cree). As a learning organization, we are committed to advancing the Truth and Reconciliation Calls to Action focused on Education for ReconciliACTION.



Introductions

- Kansas Cameron – Assistant Principal
- Steve Clark – Learning Leader
- Irene Welch – Learning Leader
- Tim Schmidt – Learning Leader
- David Weisgerber – Learning Leader
- Jessica Bates - Teacher
- Chelsey Boley – Teacher
- Kaitlin MacLeod Rogers - Teacher





Agenda

- Overview of CBe-learn High School
- Course Offerings
- Program Structure & Delivery
- Our Learning Tools
- Our Students
- Learning – What to Expect
- Our Student Supports
- How to Register
- Further info and contacts
- Q & A





CBe-learn High School provides
a flexible, caring, safe, and
engaging online learning
environment for all students.

Overview of CBe-learn High School

- Enrolment (Approx. #s)
 - 850+ full time students
 - 1500+ concurrent students
- Regular CBE High School Semester Dates
- Alberta Education curriculum
- Certified, experienced CBE teachers
- Student services and support
- Well organized, easy to navigate courses
- Flexible, weekly student work schedule
- **Funded for Calgary students, residing in the city of Calgary.**





Our Location – Lord Shaughnessy HS



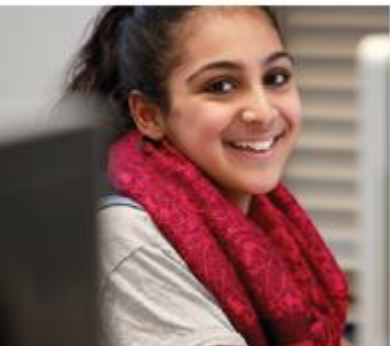


Our Students

- **Full time** - CBe-learn is their home school
- **Part Time** - 1 or 2 courses
- **Returning grade 12s** - Upgrading
- **Concurrent** - Home school is another CBE high school - 1 course

NOTE: CBe-learn is funded for students who live in Calgary. All students must reside in the city for the duration of the semester.





CBe-learn Course Offerings

CORE Classes

■ English Language Arts

- 10-1, 10-2
- 20-1, 20-2
- 30-1, 30-2

■ Mathematics

- 15, 10C, 10-3
- 20-1, 20-2, 20-3
- 30-1, 30-2, 30-3, 31

■ Sciences

- 10, 14
- 20, 24, Bio 20, Chem 20, Phys 20
- 30, Bio 30, Chem 30, Phys 30

■ Social Studies

- 10-1, 10-2
- 20-1, 20-2
- 30-1, 30-2

Not Offered at CBe-learn

- International Baccalaureate
- Advanced Placement
- Band
- Drama
- Paced (PLP)
- K&E (-4 courses)
- ESL/ELL



CBe-learn Complementary Courses

Complementary Courses

- Aboriginal Studies 10, 20, 30
- Psychology 20, 30
- Applied Sociology 30
- CALM
- Physical Education 10, 20, 30
- French 10, 20, 30
- Spanish 10, 20, 30
- Learning Strategies 15, 25, 35
- Art 10, 20, 30
- Western World History

Career Technology Studies [CTS]

- Communication Technology
- Computing Science
- Design Studies
- Fashion Studies
- Financial Management
- Foods
- Health Care Services
- Human and Social Services
- Information Processing
- Leadership
- Legal Studies
- Logistics – Supply Chain
- Natural Resources





Course Structure

- Variety of course content
 - Text to read
 - Variety of other interactive media
- Various online assessment tasks (formal and informal)
- In-person assessments (1-2 per **core** course)
- Due dates and pacing are provided in each course



Program Delivery

Synchronous Learning (happening at a scheduled time)

- Optional live sessions
- 1-on-1 Google Meets
- In-person Assessments
- Support from Student Services

Asynchronous Learning (on your own time)

- Online content accessible 24/7
- Content Lessons
- Discussions
- Assignment work

When I'm not able to join meets or log on because of illness, the main classes are always recorded, making it easier for me to catch up on homework and lessons.

P.L. (CBe-learn Student)



Our Learning Tools

- Brightspace Learning Management System (LMS)
 - Fully online classroom
- Google Workspace for Education learning tools
 - Complete accessible tool bag for students
- Technology requirements:
 - Computer with web camera and microphone
 - Consistent and reliable access to the internet

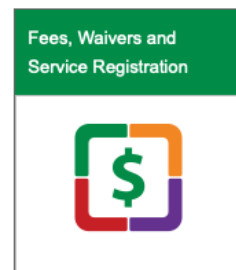
Note: Cell phones and tablets do not provide the full functionality required to work effectively in Brightspace (D2L) courses.





PowerSchool/MyCBE

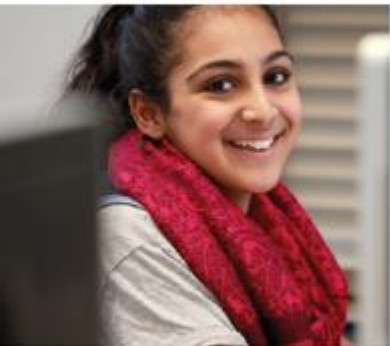
- CBe-learn uses MyCBE/PowerSchool to report grades and progress.
- Parents can do the following through MyCBE:
 - View assessment and reporting information
 - Fees and request fee waivers
 - Book school conferences





Workday Flexibility

- Courses are always available
- Student *day* is flexible, but the courses are paced and set with timelines
- Recommend daily engagement
 - 60-90 minutes per day, per course
 - Course pacing and due dates are communicated by teacher
- Live sessions (recorded)
- Private discussions with teachers





Assessment

- In-person assessments
- Additional online assessments
 - Written assignments
 - Discussion Boards
 - Quizzes
- Teachers communicate course specifics
- Course Checklists
- High School Proficiency
- Regular feedback





What Makes a Successful Online Student?

- Independent
- Self-Discipline
- Time Management Skills
- Motivated
- Good Self Advocacy Skills
- Strong Reading Comprehension and Writing Skills
- Strong Home Support System



Assessment Centre

- Most core classes have 1 or 2 mandatory in-person assessments
- A chance to connect face-to-face
- Good practice for higher-stakes diplomas



Student Supports & Services Team

- Personalizing learning strategies
- Meeting face-to-face
- IPP Support
- Get it Done Days
- Post secondary planning



NOTE: CBe-learn student services team will refer concurrent students to their homeschool should these needs arise for them.



Registration-How To

Full time/Part time

- CBE's transfer request opens February 9 and will close on March 15, 2026.
- 2026-2027 form found on the CBE High School Transfer page.

Concurrent

- Select CBe-learn courses are available to students attending their CBE community High School.
- Students request a course through their Student Services Counsellor at their home school.





Further Information & Contacts

Position	Name & Contact Info
Student Services Counsellor, LL (Last Names A-J)	Irene Welch 403-777-7971 ext. 7612 irwelch@cbe.ab.ca
Student Services Counsellor (Last Names K-Z)	Chelsey Verhulst 403-777-7971 Ext. 7676 cdverhulst@cbe.ab.ca
High School Inclusive LL / Resource	Karen Pysyk klpysyk@cbe.ab.ca Tim Schmidt tischmidt@cbe.ab.ca

High School | Assistant Principal | Kansas Cameron

Q & A



Flexibility

My work that I turn in is much more **detailed and thorough** because I do it when I have the most time and energy for it. N.C. (CBe-learn Student)

Online school offers you the **freedom** to create a **well-rounded, fulfilling** experience that traditional schooling doesn't always offer. Z.B. (CBe-learn Alumni)

Being an online learner means that you are in control of your study schedule, which at first may seem daunting, but you ARE in control.... it's an **ideal environment for someone to exhibit self-growth in**. R.F. (CBe-learn Alumni)

Helpful Skills

When I first signed up for online school I hadn't quite grasped how **self-directed** it was... Thankfully a lot of teachers reached out online to see how I was doing and supported me. B.H. (CBe-learn Student)

Learning to **ask for help** is super important in online learning. - Z.S. (CBe-learn Alumni)

I would say in order to succeed in learning online, the most important skill would be **self-discipline**. S.A. (CBe-learn Alumni)

Why Online?

I think most people assume that there's a lack of social interaction, but teachers greatly encourage it, and if you reach out, then **you can meet some amazing people**. N.C. (CBe-learn Student)

Online school offers you the **freedom** to create a **well-rounded, fulfilling** experience that traditional schooling doesn't always offer. Z.B. (CBe-learn Alumni)

With online learning you learn **time management and discipline**, which is something most students actually struggle with transitioning into high school, and then out of it into post-secondary. R.F. (CBe-learn Alumni)

